

BOLTSEAL



APPLICATIONS

- Containers
- Enclosures
- Trucks
- Marine Transport

MATERIAL

- Carbon Steel
- ABS
- Polypropylene

FEATURES

- ISO/PAS 17712
- Diameter: ABS rod 10,5 mm x steel rod 7mm
- Breaking strength: 15.5 KN
- Anti-rotation
- Cutting tools used
- Easy to close (no tools required)

MARKINGS

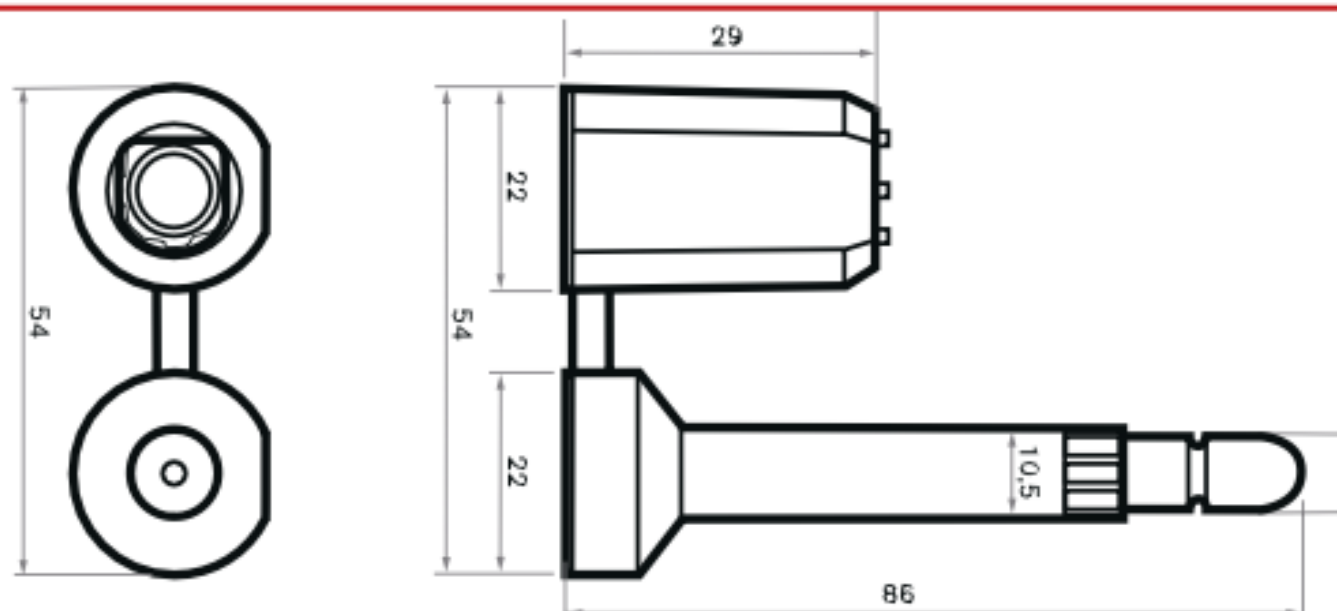
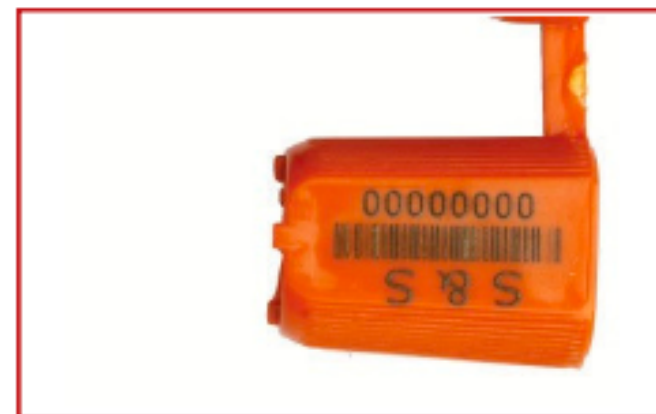
- Laser marking:
- Logo • Text • Series (up to 8 digits)
 - Barcode available on request

COLORS

- White
- Blue
- Yellow
- Orange

PACKAGING

- 200 pieces/box
- Dimensions: 420 x 220 x 230 mm
- Weight: 12,5 Kg



Nairobi | Kenya

Mobile: +254 713 782 746 | +40 756 400 900
office@nidoholding.co.ke www.nidoholding.co.ke